

Janice K. Brewer
Governor

Arizona State Forestry Division



Scott Hunt
Acting State Forester

Office of the State Forester
1110 W. Washington St., Suite 100
Phoenix, AZ 85007
(602) 771-1400

June 24, 2010

Fire restrictions on State Trust Lands

PHOENIX, ARIZONA –Fire and smoking restrictions are being implemented by the State Forestry Division beginning June 24th at 12:00pm noon and running through July 31st or until further notice.

The prohibition will apply to all State Trust Lands within Coconino County, in the southern portion of Mohave County, and will expand from an earlier restriction to include all of Yavapai County.

Last month restrictions were placed on State Trust Lands in Maricopa, Pinal, Yuma, and La Paz Counties as well as the southern portions of Gila and Yavapai Counties.

The restrictions are deemed necessary due to increased fire danger from developing hot, dry weather conditions and heavy vegetation growth. As brush and grasses dry out, they become fuel for fire and greatly increase the risk of major wildfires.

The restrictions will be:

- Building, maintaining, or using a fire, campfire, or charcoal burning device is prohibited. (Petroleum-fueled stoves, lanterns, or heating devices are *exempt* from these restrictions.);
- Use of fireworks as defined by Title 36, Public Health and Safety (ARS § 36-1601) is prohibited;
- Smoking is prohibited except within an enclosed vehicle, building, developed campground, or in an area at least 10 feet in diameter that is barren or cleared of all flammable materials;
- Welding or operating acetylene or other torch with an open flame is prohibited.

These restrictions apply to everyone with permits and leases issued by the State Land Department and holders of hunting and fishing licenses. State, Federal, and local fire and law enforcement officers, plus members of organized firefighting forces are exempt from these prohibitions while in the performance of official duties.

Information and tips on wildfire safety and preparedness can be found at:

www.azsf.az.gov

http://www.azsf.az.gov/fire_information/default.asp

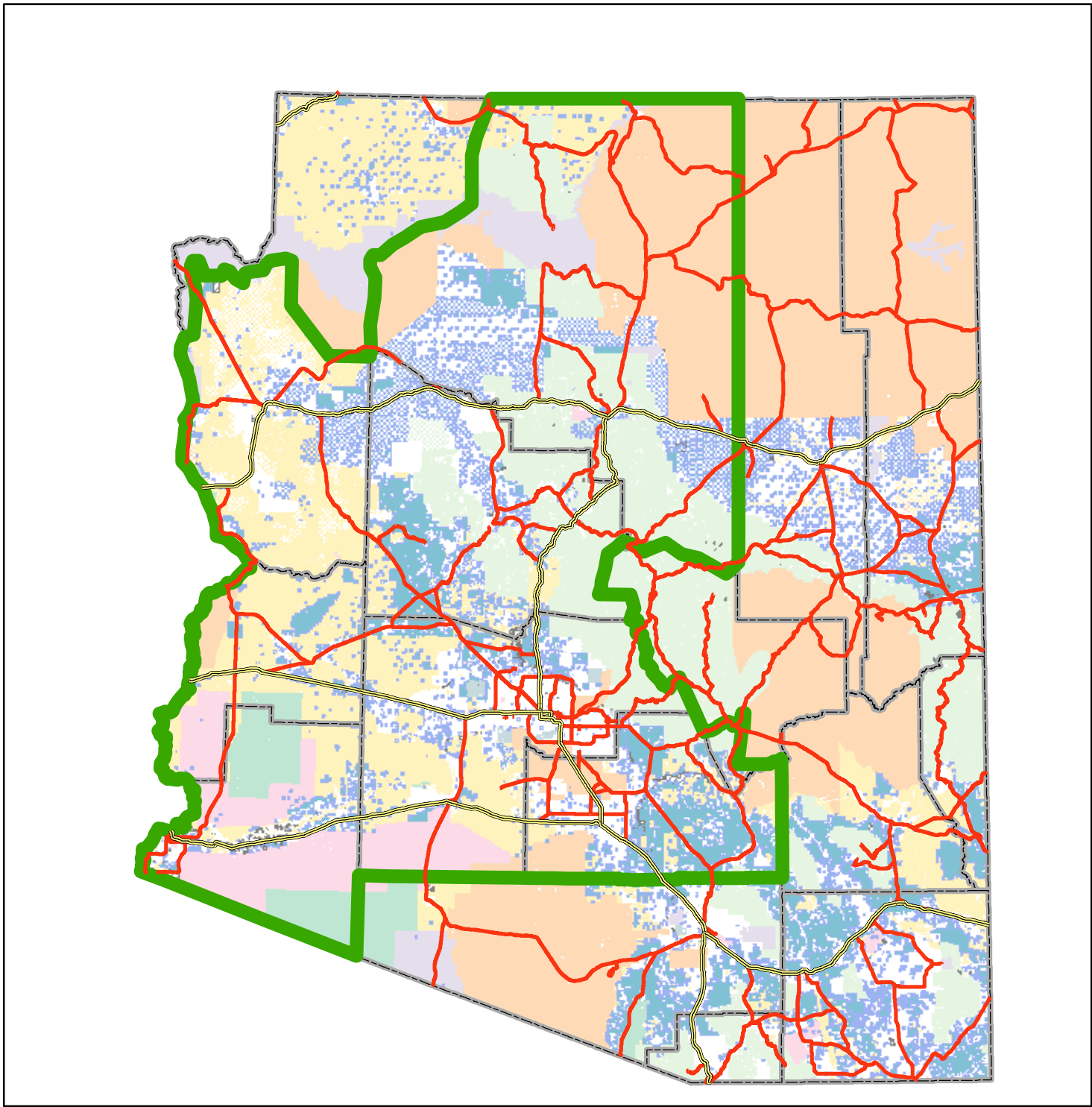
Fire Restrictions - Area Description

Coconino, Maricopa, La Paz, Pinal, Yavapai, Yuma Counties: All State Trust Lands

Mohave County: All State Trust Lands below the Grand Canyon

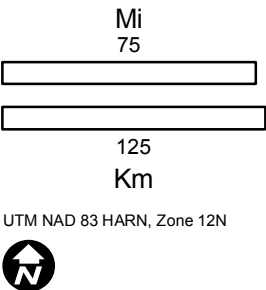
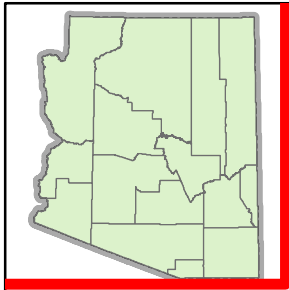
Gila County: All State Trust Lands south of State Highway 60a

See map on the next page.



State Land Fire Restrictions Effective June 24, 2010

6/16/10
Hunt



Legend

2010_fire_restriction_2	Military
Arizona Land Ownership	NPS
Owner	Other
BLM	Private
USFS	State Trust
Indian Lands	USFWS
Local or State Parks	County Boundaries