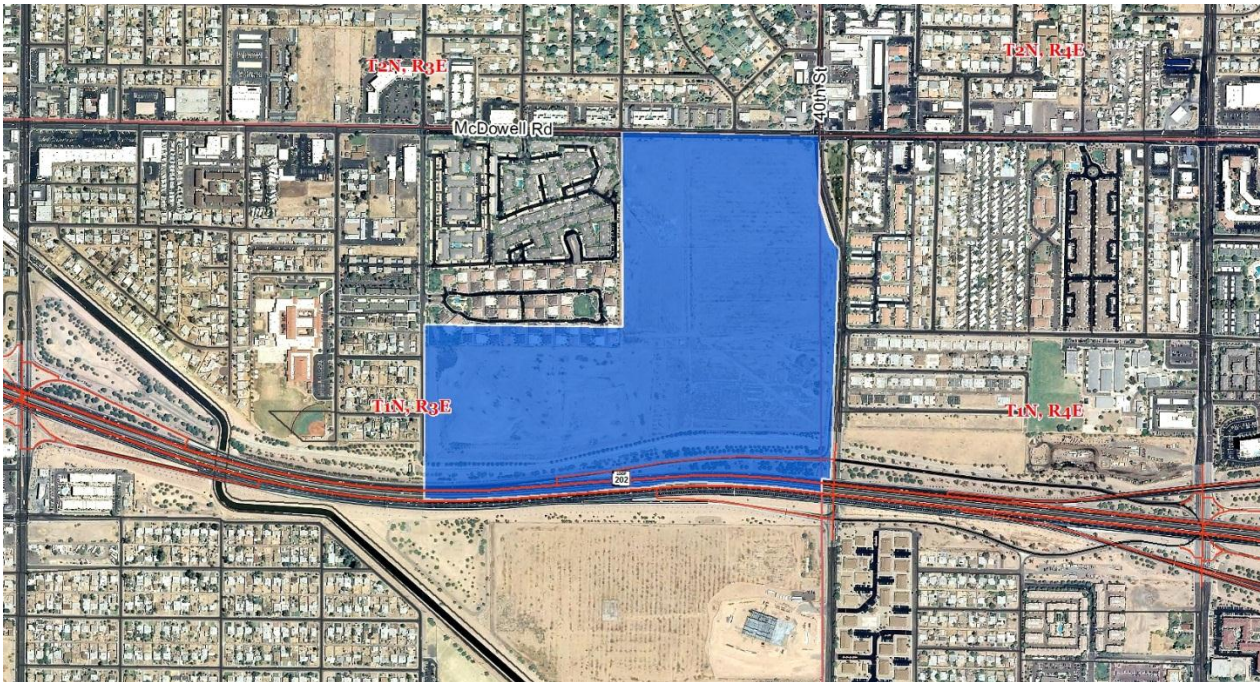


AVAILABLE FOR SALE
SWC OF 40TH STREET AND MCDOWELL ROAD



APPLICATION No.: TBD

AUCTION LOCATION: ARIZONA STATE LAND DEPARTMENT
1616 WEST ADAMS, LOWER LEVEL AUDITORIUM
PHOENIX, AZ 85007

ACREAGE: 64 (NET) (MORE OR LESS)

ZONING: GENERAL PLAN/ZONING – MIXED USE

UTILITIES: SEE SITE EVALUATION LINK IN SIDEBAR

ALTA SURVEY PHASE I REPORT GEOTECHNICAL REPORT
SITE EVALUATION AUCTION NOTICE APPRAISAL



FOR ADDITIONAL INFORMATION CONTACT:
SALES ADMINISTRATOR (602) 542-3000

DISCLAIMER: This information is designed for general overview purposes only. Unless otherwise stated, all figures and depictions are approximate. Prospective bidders should review all information in the State Land Department's records relating to the property and seek technical or legal advice as needed to assure the understanding of all legal descriptions, plat maps, surveys, and other documents relevant to the property. Once an auction price is established, appraisals may be checked-out from the ASLD office for 48-hours. Informational marketing CDs are available upon request. Contact Brynn Carlile for more information (602) 542-3121. Visit us online at www.land.state.az.us.

