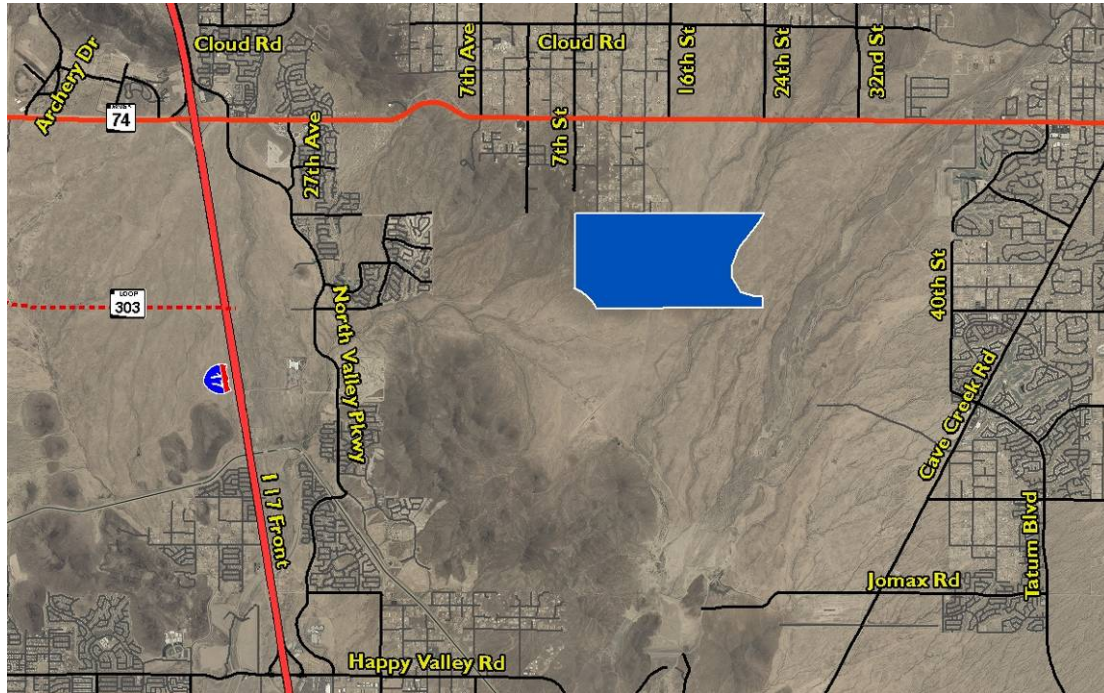


AVAILABLE FOR SALE
1 MILE SOUTH OF CAREFREE HIGHWAY, 4 MILES EAST OF I-17



CITY OF PHOENIX, PRIORITY 2D

APPLICATION NO.: 53-113669

AUCTION DATE: OCTOBER 15, 2010 AT 11:00 A.M.

APPRAISED VALUE: \$25,850,000

AUCTION LOCATION: STATE LAND DEPARTMENT

1616 WEST ADAMS, LOWER LEVEL AUDITORIUM
PHOENIX, AZ 85007

ACREAGE: 1,139.21 (MORE OR LESS)

ZONING: RURAL 43 (RESIDENTIAL), CITY OF PHOENIX

UTILITIES: NOT AVAILABLE

ADDITIONAL INFO.: LEGAL ACCESS AVAILABLE, BUT NOT PHYSICAL ACCESS

FOR ADDITIONAL INFORMATION CONTACT:
CHARLES WHITE, ADMINISTRATOR (602) 542-3000

DISCLAIMER: This information is designed for general overview purposes only. Unless otherwise stated, all figures and depictions are approximate. Prospective bidders should review all information in the State Land Department's records relating to the property and seek technical or legal advice as needed to assure the understanding of all legal descriptions, plat maps, surveys, and other documents relevant to the property. Once an auction price is established, appraisals may be checked-out from the ASLD office for 48-hours. Informational marketing CDs are available upon request. Visit us online at www.land.state.az.us. Contact Melissa Hyde for additional information (602) 364-2721.

ALTA / TITLE / LEGAL DESCRIPTION PHASE 1 REPORT
AUCTION NOTICE APPRAISAL - AVAILABLE AT ASLD OFFICE

